



## **RUNWAY 10-28 OPENS ON MARCH 15, 2018**

In order to maintain its facilities to reliability and safety standards, Aéroports de Montréal is starting construction work for the 2018 season. This year, work will take place on the taxiway and access roads to runway 06L-24R. The runway will remain operational during the work.



### **FIRST PHASE OF THE WORK - MARCH 15 TO JUNE 30, 2018**

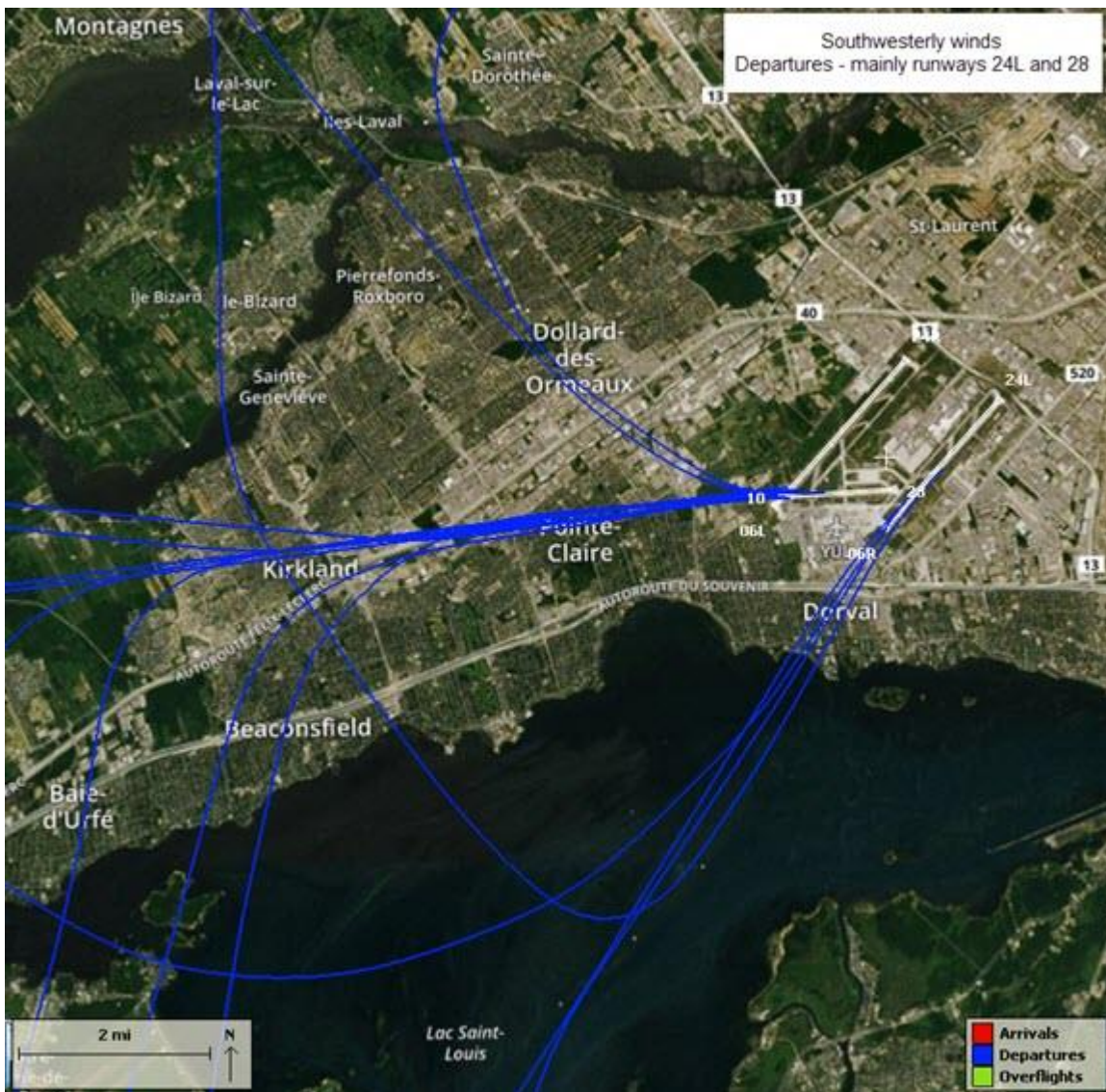
#### **Runway 10-28 open**

- Will be used for departures in Southwesterly wind conditions - residents of Pointe-Claire, Kirkland and Dollard-des-Ormeaux will observe overflights in their areas.

#### **Runway assignments during this period:**

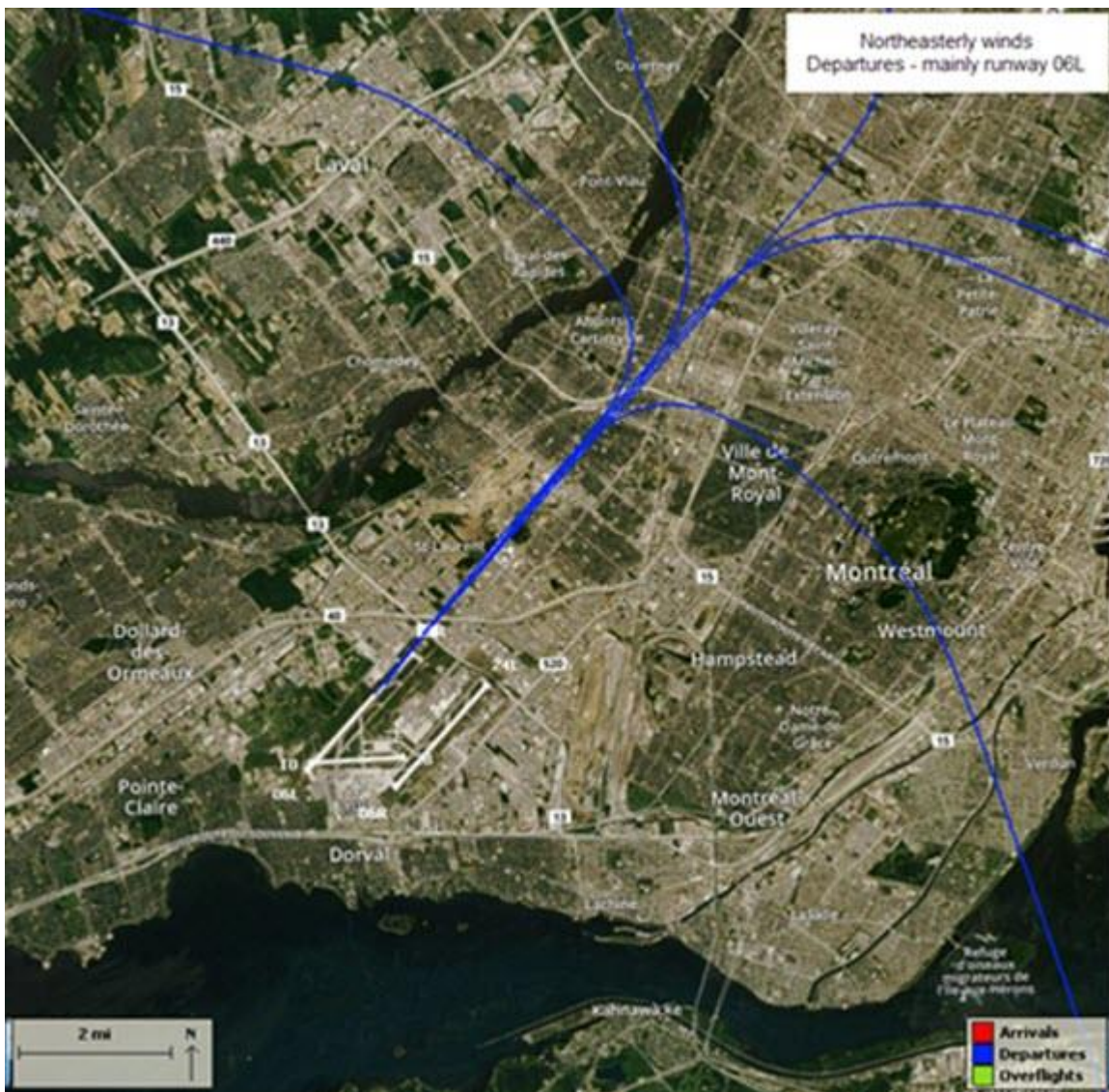
- Southwesterly winds:
  - Departures: mainly runways 24L (south Dorval) and 28 (Pointe-Claire, Kirkland and Dollard-des-Ormeaux)
  - Arrivals: mainly runway 24R (usually assigned for arrivals in Southwesterly wind conditions)





- Northeasterly winds:
  - Departures: mainly 06L (north St-Laurent, Ahuntsic-Cartierville)
  - Arrivals: mainly 06R (south Dorval)





Additional newsletters will be sent during the construction season. If you would like to subscribe to ADM's newsletter on soundscape management, please write to: [info@admtl.com](mailto:info@admtl.com).

For more information about the soundscape at Montréal-Trudeau, please read the FAQ section of ADM's website at: <http://www.admtl.com/en/adm/communities/soundscape/faq>.



---

Si vous ne désirez plus recevoir l'infolettre, [cliquez ici](#).  
If you do not wish to receive this newsletter, please [click here](#).