

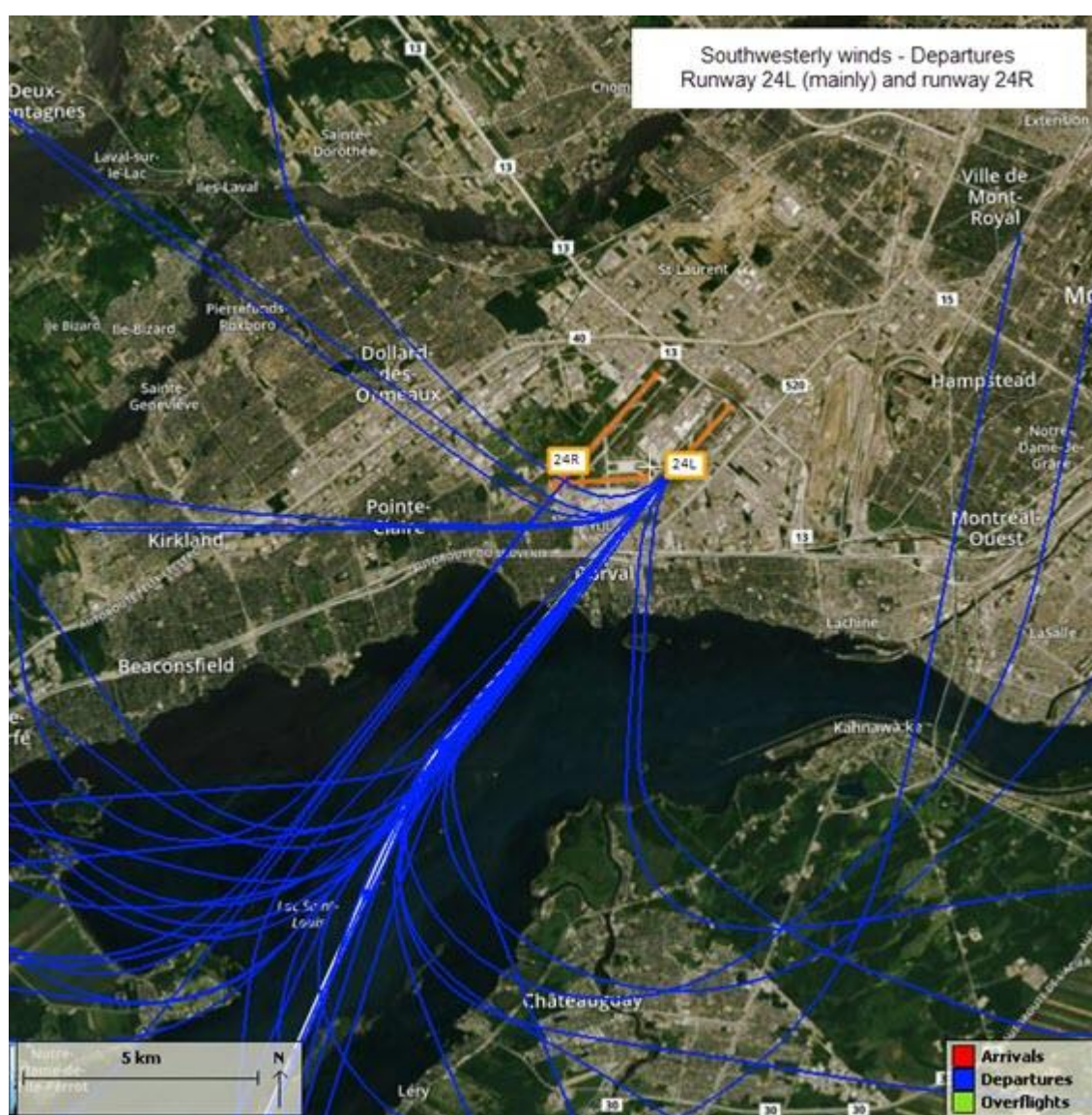


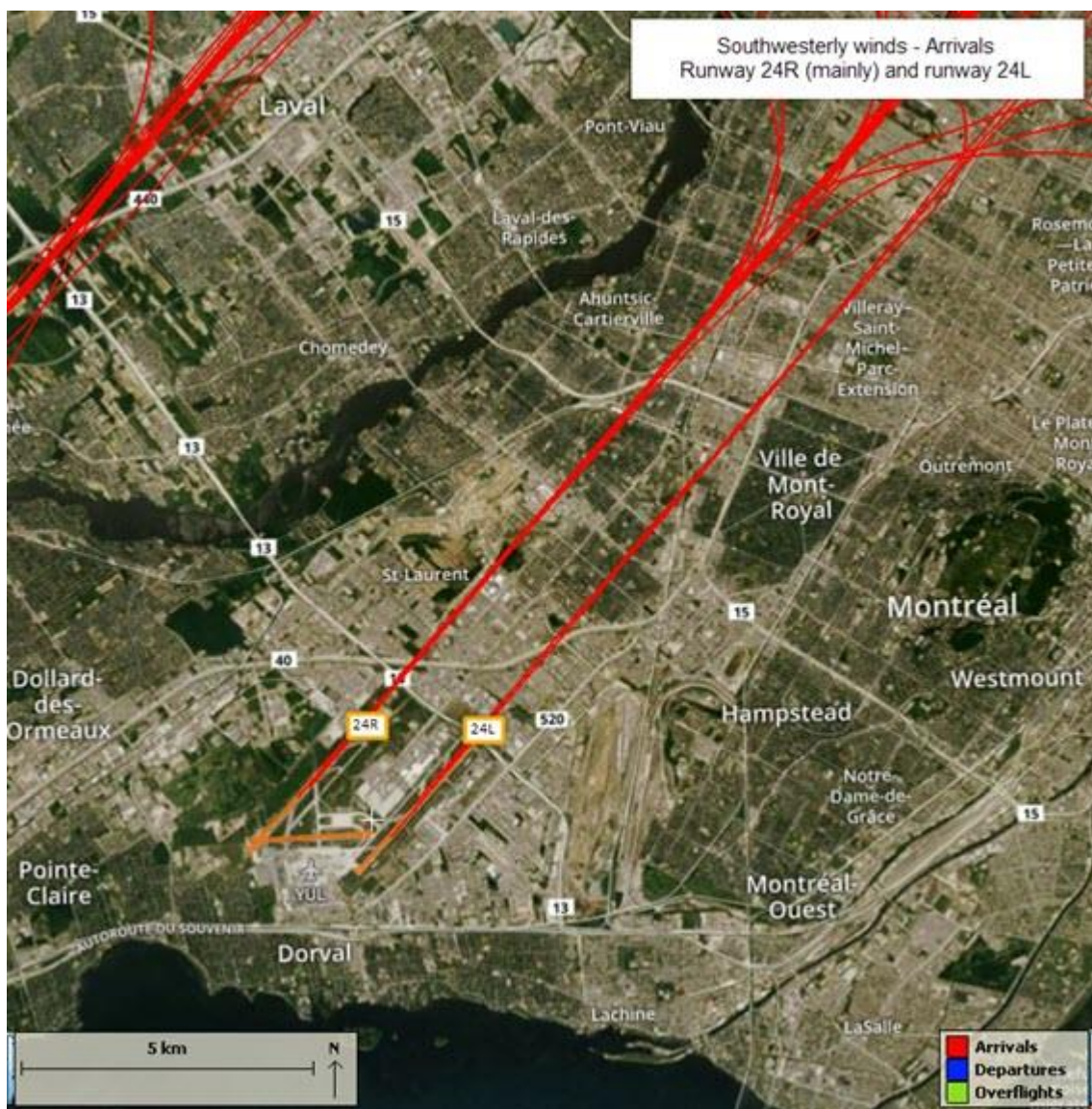
RETURN TO THE USUAL RUNWAY ASSIGNMENT - FIRST PHASE OF THE CONSTRUCTION WORK COMPLETED

Aéroports de Montréal has completed the first phase of the construction work on the taxiway and access roads to runway 06L-24R. The second phase of this project will be done in 2019. The work scheduled for the remaining part of the summer will not require changes to the usual runway assignment for a long period.

As of noon on June 22, the runway assignment returns to the usual way:

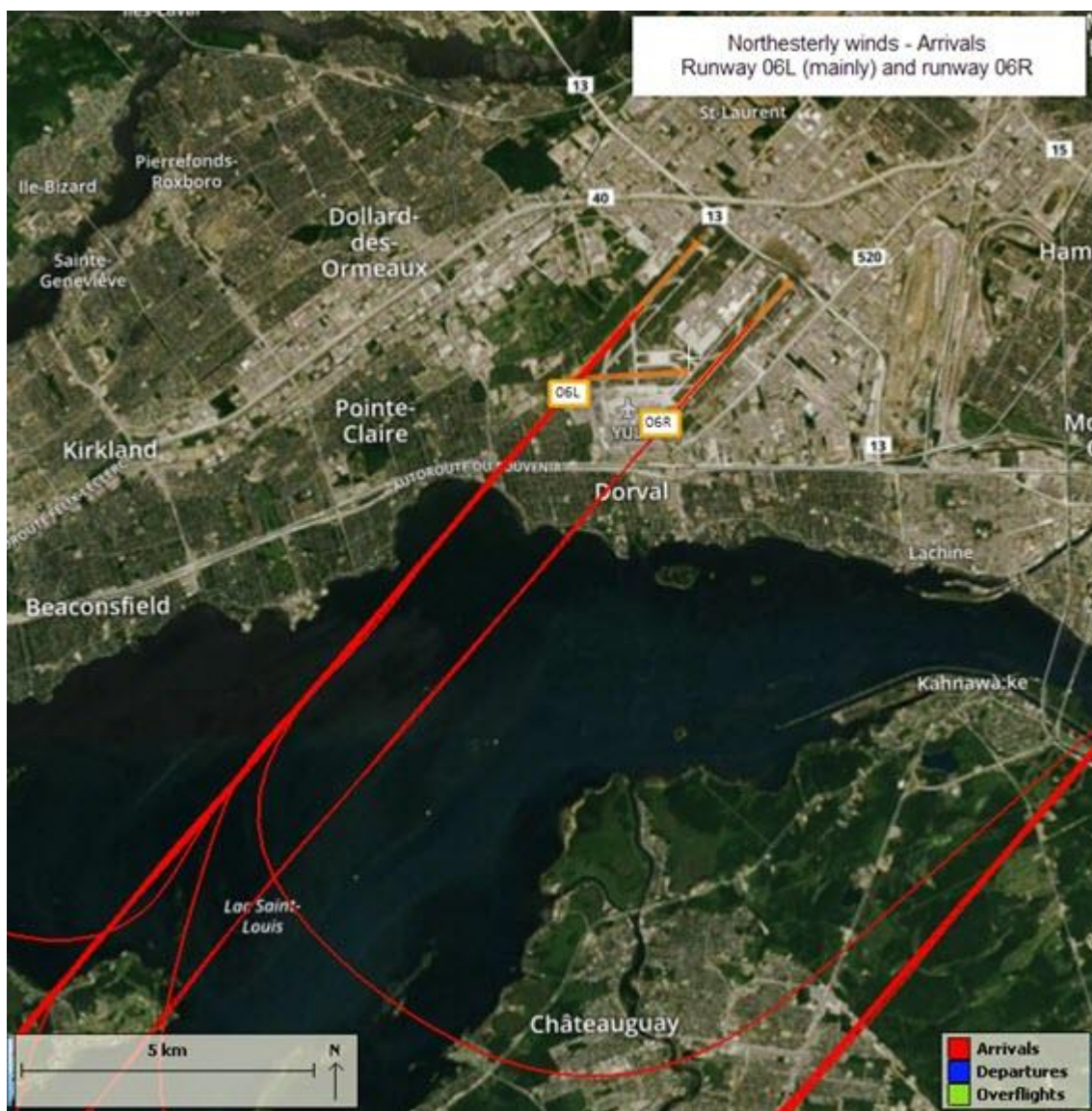
- **Southwesterly winds:**
 - **Departures:** Runway 24L (mainly) and runway 24R
 - **Arrivals:** Runway 24R (mainly) and runway 24L





- **Northeasterly winds:**
 - **Departures:** Runway 06R (mainly) and runway 06L
 - **Arrivals:** Runway 06L (mainly) and runway 06R





As of June 22, runway 10-28 will be closed for several months.

If you would like to subscribe to ADM's newsletter on soundscape management, please write to: info@admtl.com.

For more information about the soundscape at Montréal-Trudeau, please read the FAQ section of ADM's website at: <http://www.admtl.com/en/adm/communities/soundscape/faq>.