



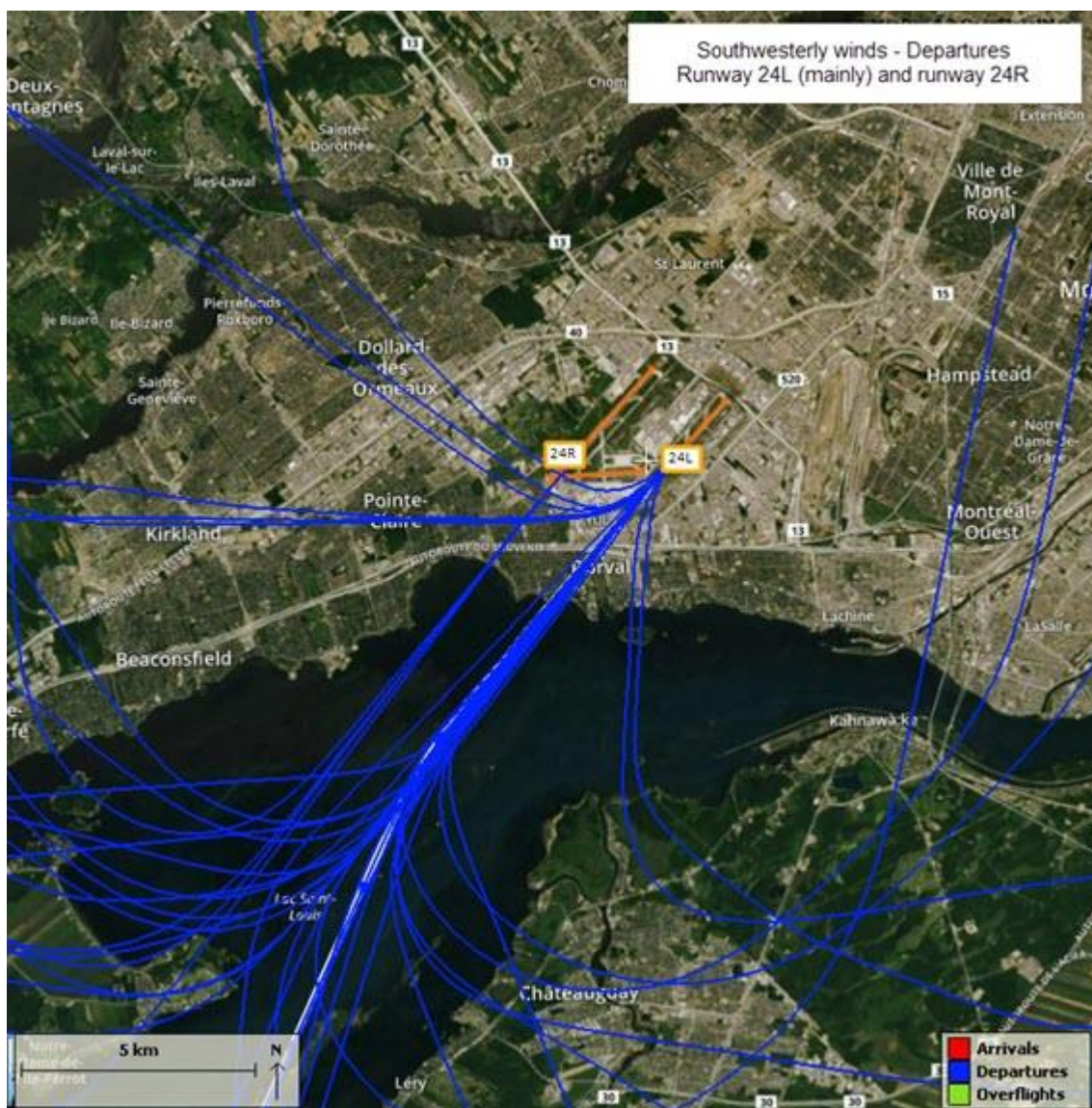
## JUNE 20 - RETURN TO THE USUAL RUNWAY ASSIGNMENT

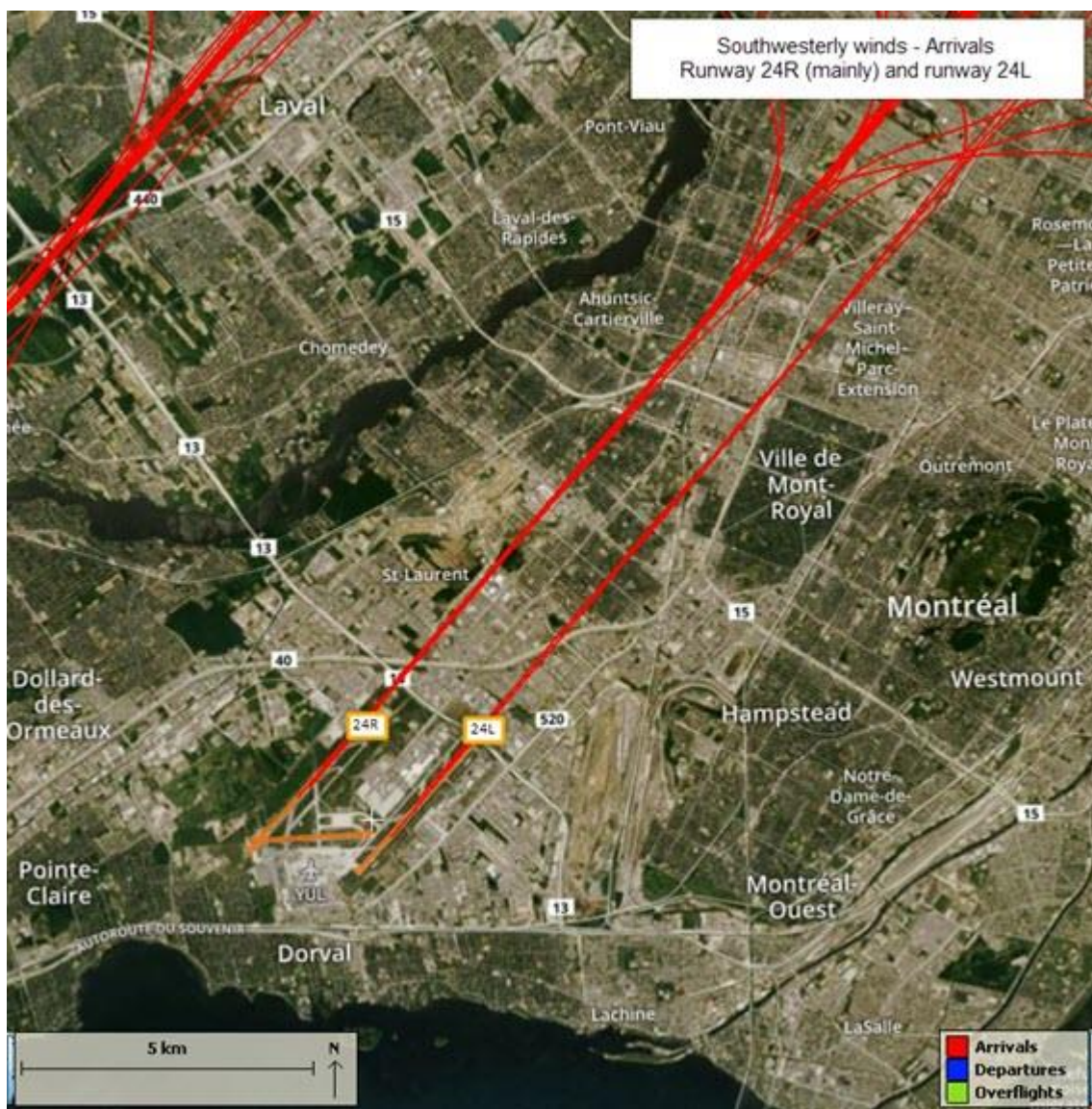
Aéroports de Montréal has completed the first phase of the construction work for the rehabilitation of runway 06L-24R.

Runway 06L-24R will be closed from 10 p.m. on June 19 to midday on June 20. At that time, it will reopen and will be operating at the runway's full length.

On June 20, at midday, runway assignment will return to the usual way:

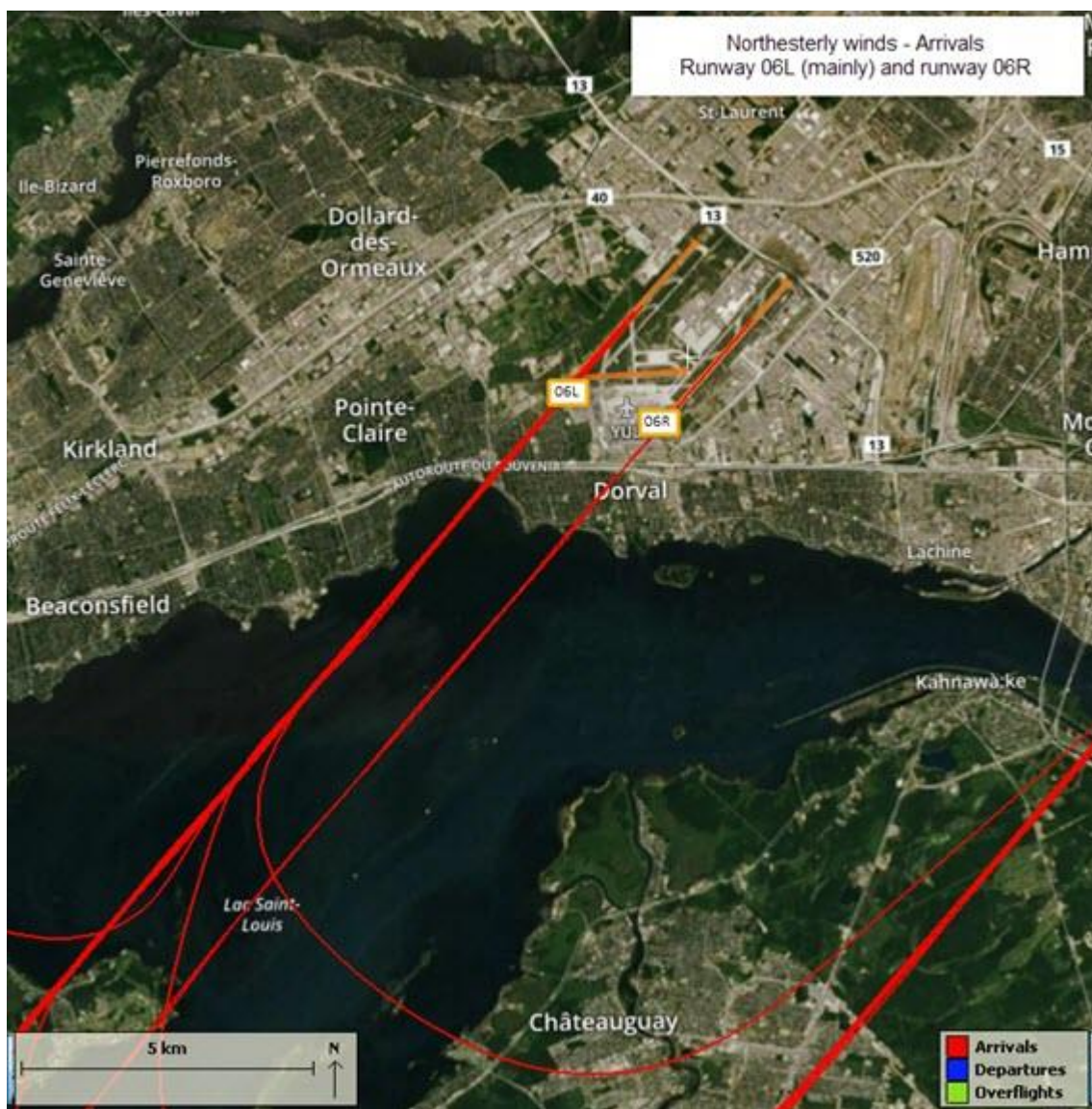
- **Southwesterly winds:**
  - **Departures:** Runway 24L (mainly) and runway 24R
  - **Arrivals:** Runway 24R (mainly) and runway 24L





- **Northeasterly winds:**
  - **Departures:** Runway 06R (mainly) and runway 06L
  - **Arrivals:** Runway 06L (mainly) and runway 06R





If you would like to subscribe to ADM's newsletter on soundscape management, please write to: [info@admtl.com](mailto:info@admtl.com).

For more information, please see the [Soundscape](#) section of ADM's website.



Si vous ne désirez plus recevoir l'infolettre, [cliquez ici](#).  
 If you do not wish to receive this newsletter, please [click here](#).