



**SOUNDSCAPE ADVISORY COMMITTEE**

**MONTRÉAL-PIERRE ELLIOTT TRUDEAU  
INTERNATIONAL AIRPORT**

**SUMMARY**

**Meeting of April 22<sup>nd</sup>, 2016**



Following is a summary of the meeting of the Soundscape Advisory Committee that was held on April 22<sup>nd</sup>, 2016 at Aéroports de Montréal's Head Office.

Present :

- Pierre-Paul Pharand, Aéroports de Montréal
- Edgar Rouleau, Mayor, City of Dorval
- Alan DeSousa, Mayor, Borough of Saint-Laurent
- Mena Salib, Air Canada
- Sylvain Caron, Transports Québec
- Richard Beaudet, Transport Canada
- Véronik Blanchette, Transport Canada
- Lyne Moreau, NAV Canada
- Anne Marcotte, Aéroports de Montréal

Guest:

- Justin Bourgault, Transports Canada / Transport Canada

Absent :

- Christiane Beaulieu, Aéroports de Montréal
- Aref Salem, Responsible for Transportation, City of Montreal / Councillor, Borough of Saint-Laurent
- Morris Trudeau, Mayor, City of Pointe-Claire
- George Petsikas, Air Transat
- Nathalie Beaulieu, Skyservice
- Philippe Serafino, American Airlines

Secretary :

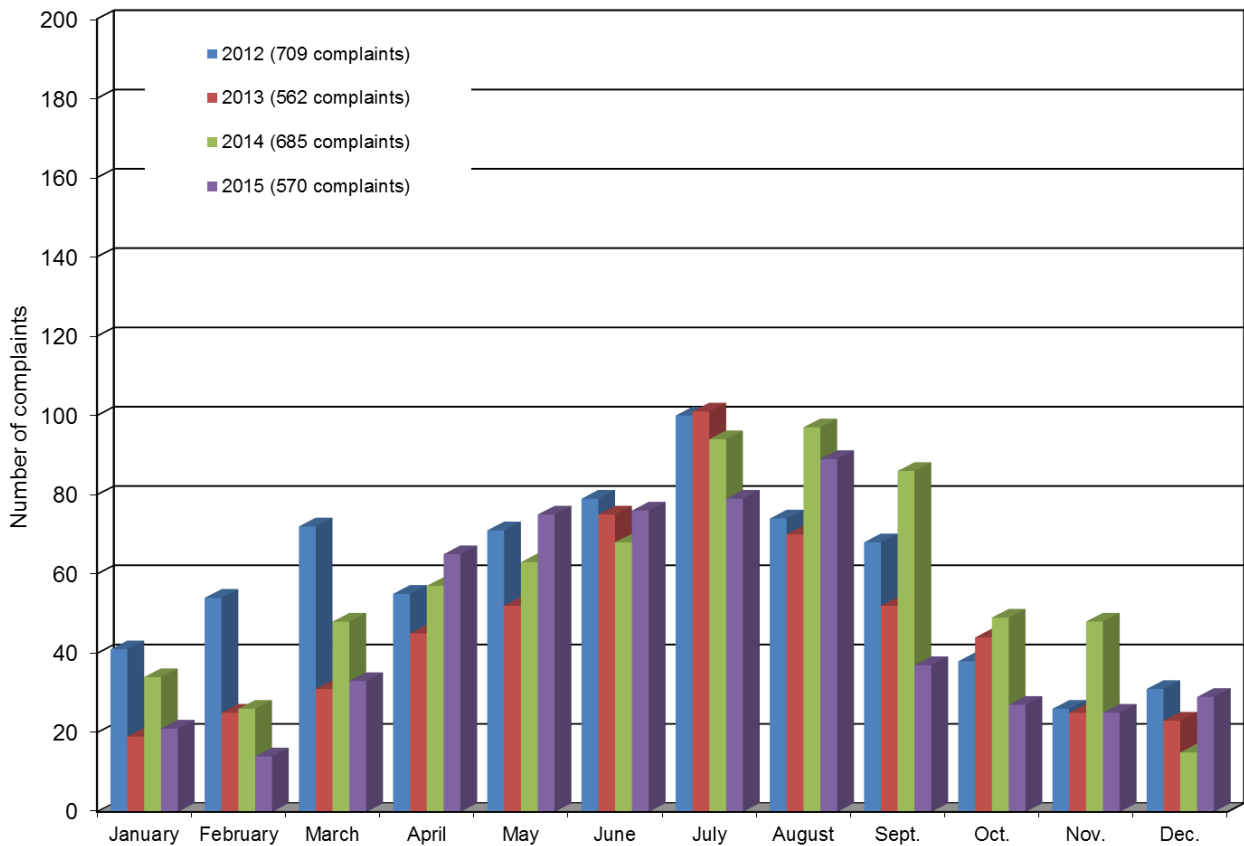
- Anne-Marie Urban, Aéroports de Montréal



**A. YEARLY INDICATORS – 2015**

- 239 people filed 570 noise complaints in 2015
  - Decrease of 4 % of complainants compared to 2014
  - Decrease of 17 % of complaints compared 2014
  - 47% of the complaints were filed by 8 complainants.
  
- Runway 10-28 was closed from May 25 to October 19 because of construction work on the apron and at the deicing centre.
  
- In some periods during the work, there was an increase in the use of runway 24R for departures and of runway 24L for arrivals.

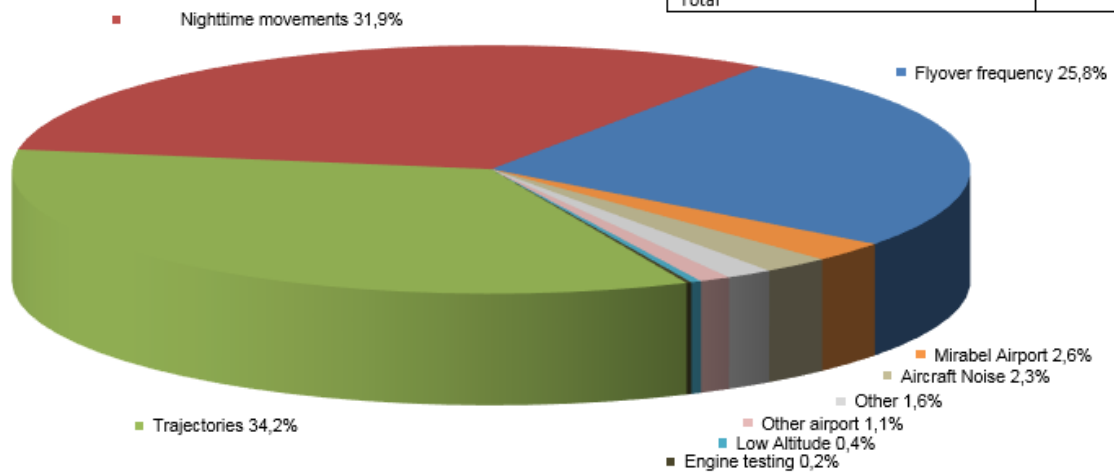
**NOISE COMPLAINT STATISTICS**





**CAUSES OF DISTURBANCE - YEAR 2015**  
**AÉROPORT MONTRÉAL-TRUDEAU**

Causes of disturbance in 2015	Number of complaints
Trajectories	195
Nighttime movements (midnight to 7 a.m.)	182
Flyover Frequency	147
Mirabel Airport	15
Aircraft Noise	13
Other	9
Other Airport	6
Low Altitude	2
Engine Testing	1
<b>Total</b>	<b>570</b>

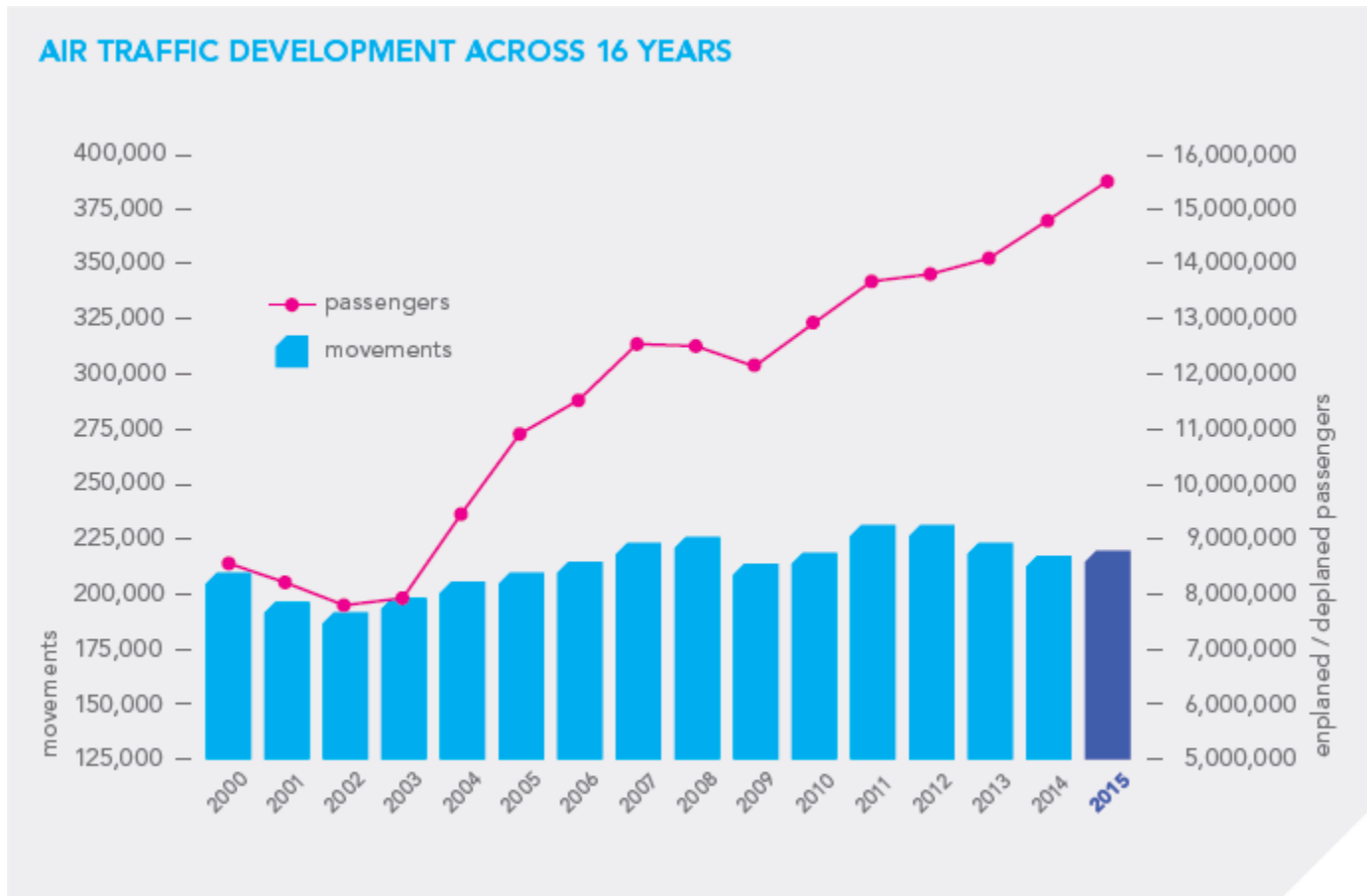


# MONTRÉAL-TRUDEAU

## LA GESTION DU CLIMAT SONORE SOUNDSCAPE MANAGEMENT

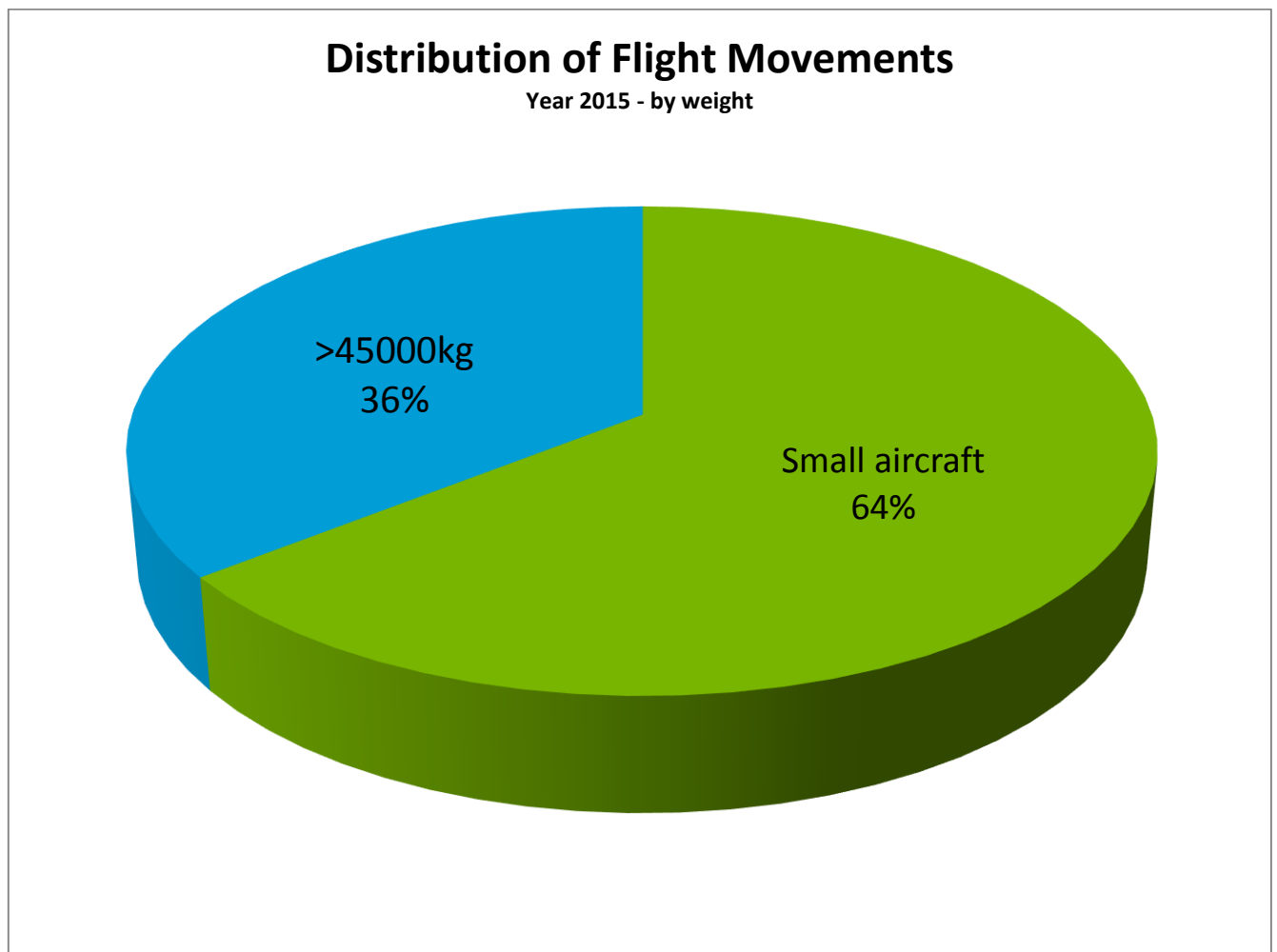


### Number of aircraft movements / passengers:





**Flight movements – Traffic today:**

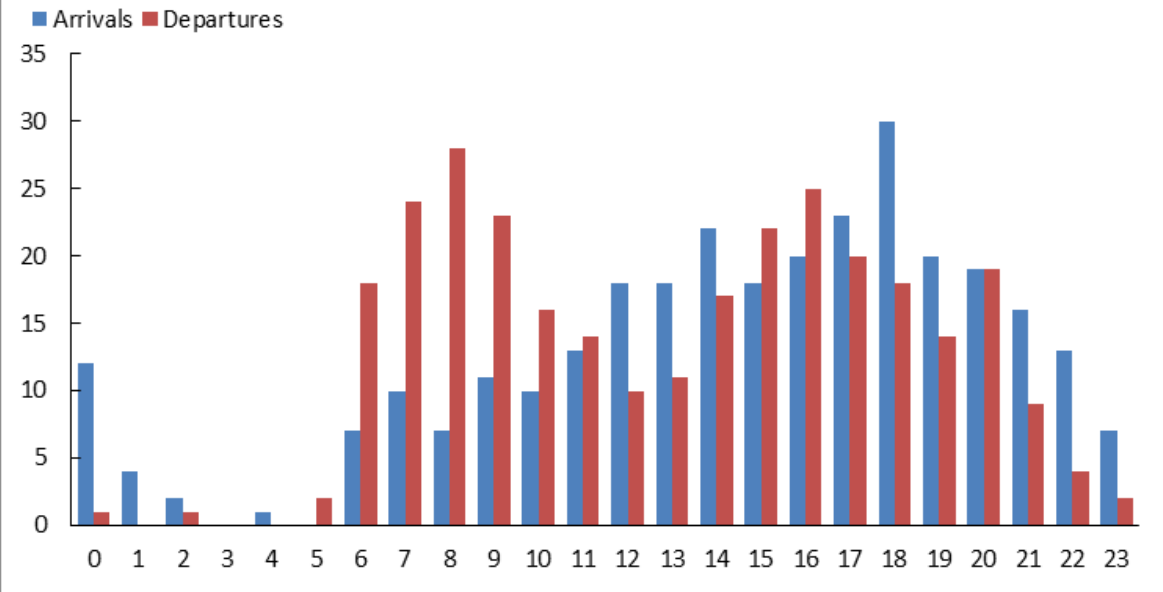


- Aircraft +45,000 kg (Airbus, Boeing)
- Aircraft -45,000 kg (CRJ, Dash-8, general aviation)



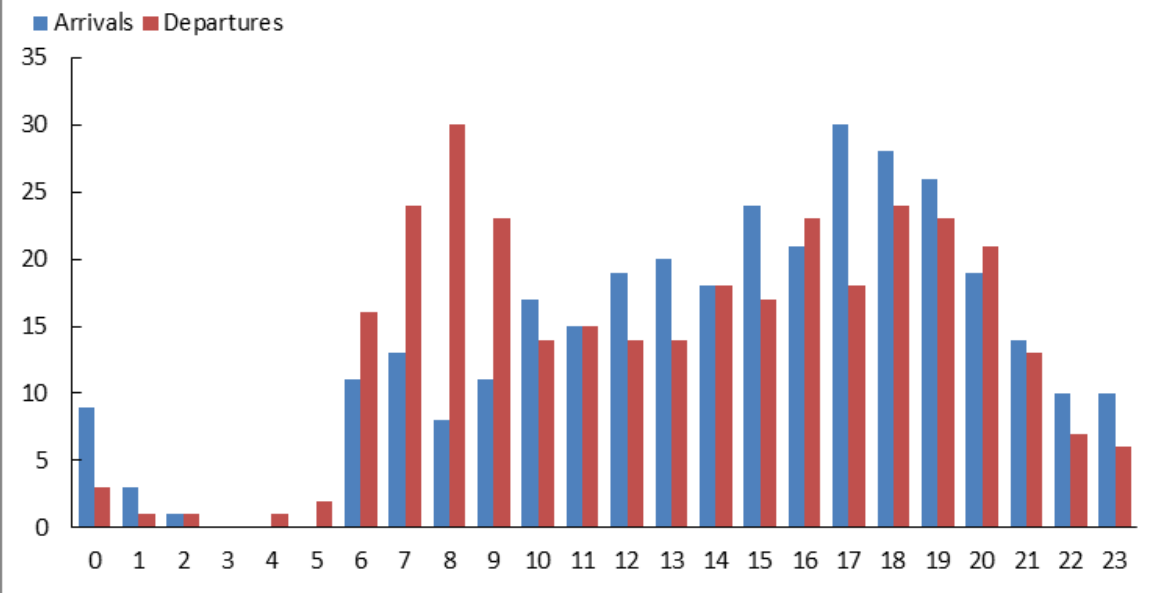
**Arrivals and Departures (hourly)**

*Typical Day - Winter 2015*



**Arrivals and Departures (hourly)**

*Typical Day - Summer 2015*

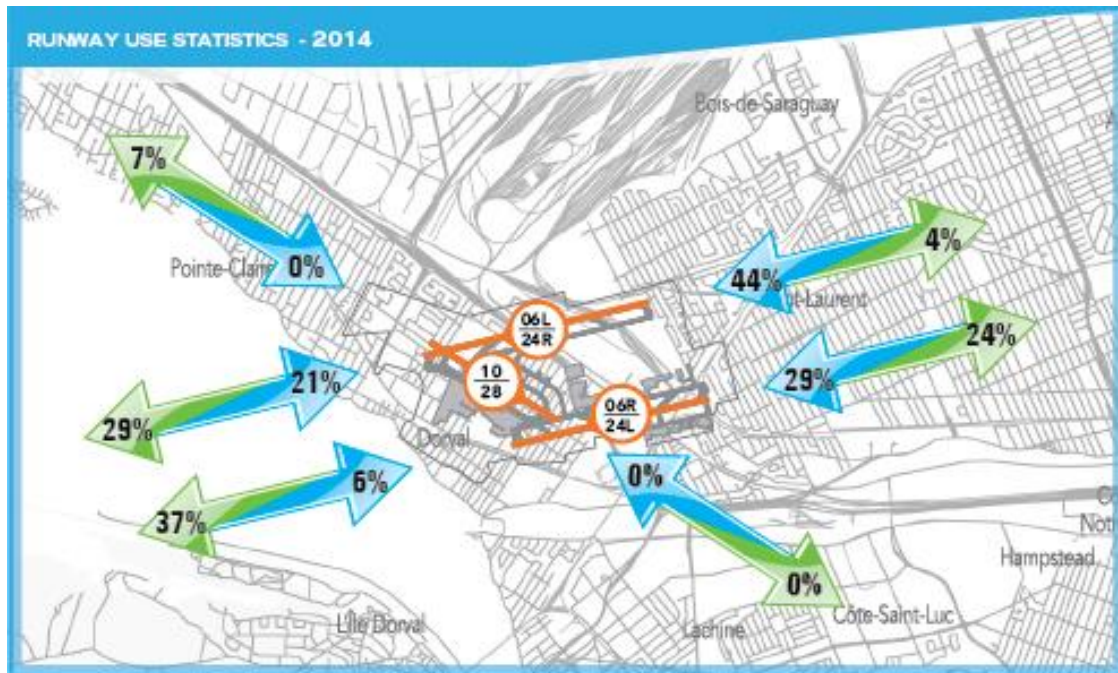
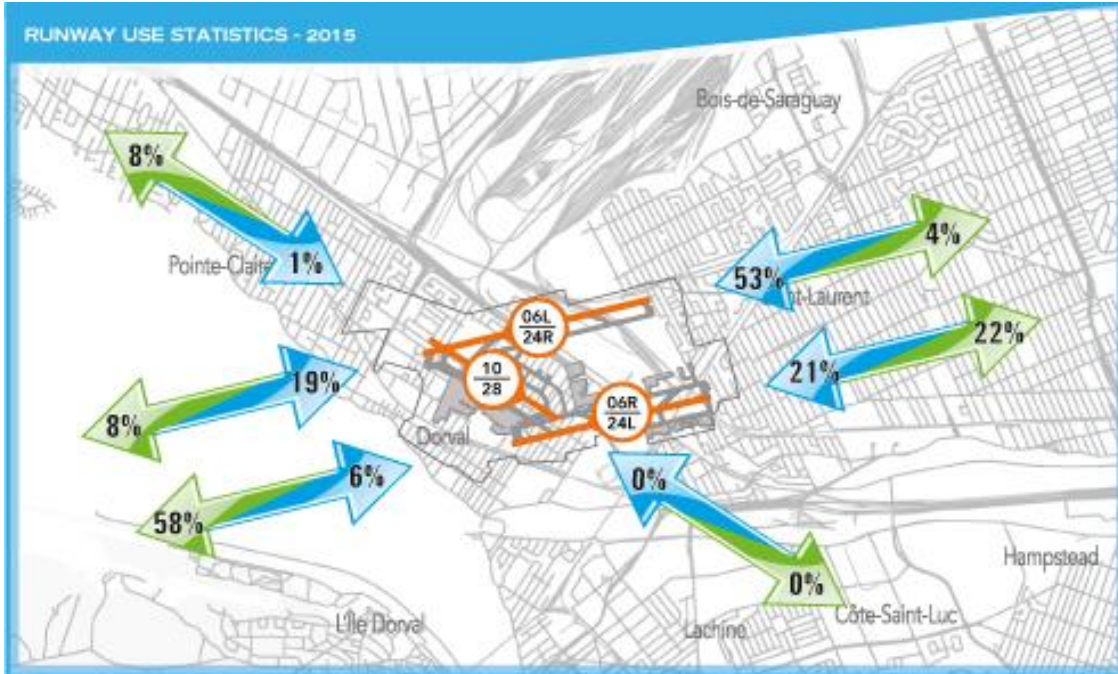


# MONTRÉAL-TRUDEAU

## LA GESTION DU CLIMAT SONORE SOUNDSCAPE MANAGEMENT



### Runway Use Statistics – Year 2015 vs 2014





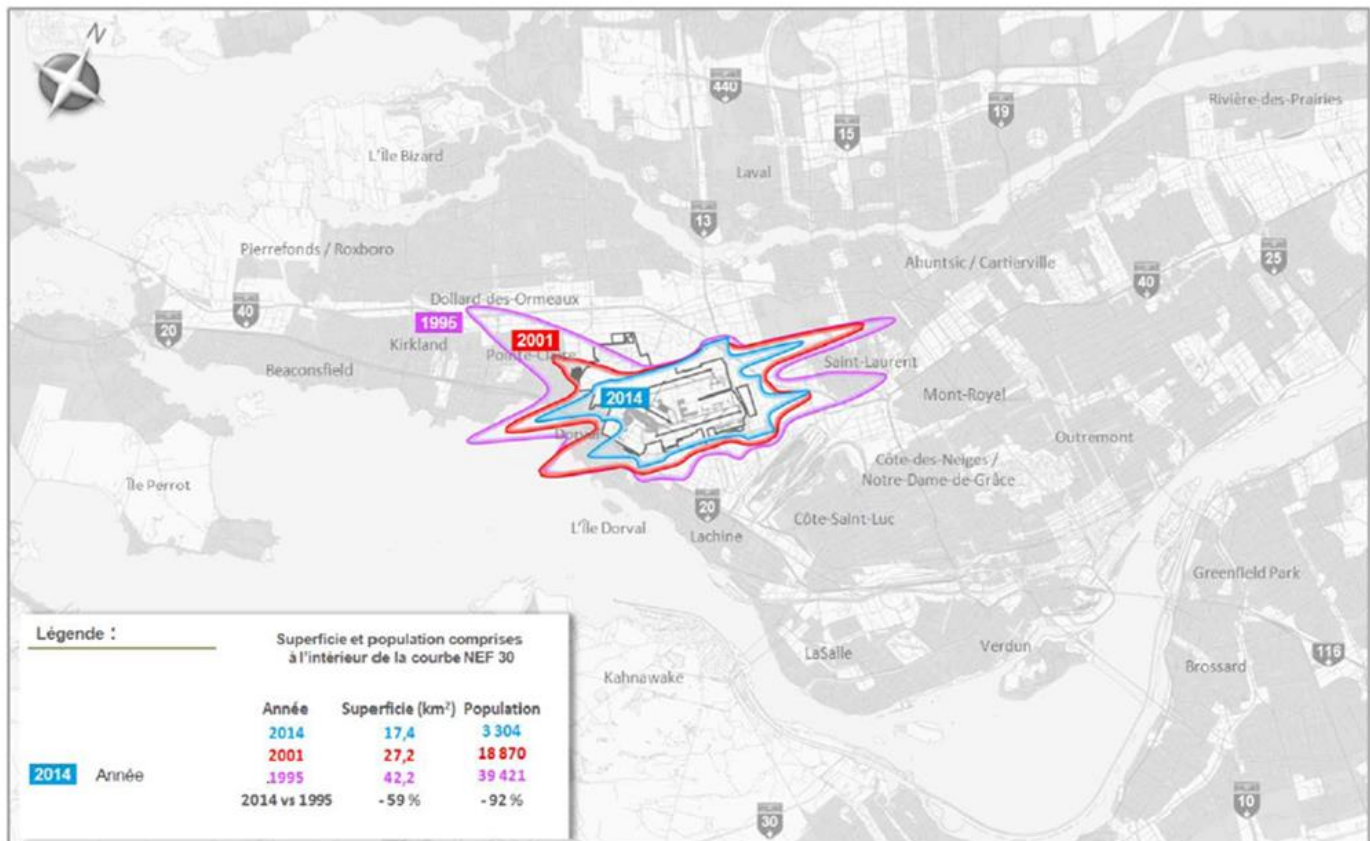
# MONTRÉAL-TRUDEAU

## LA GESTION DU CLIMAT SONORE SOUNDSCAPE MANAGEMENT



### B. NEF 2014

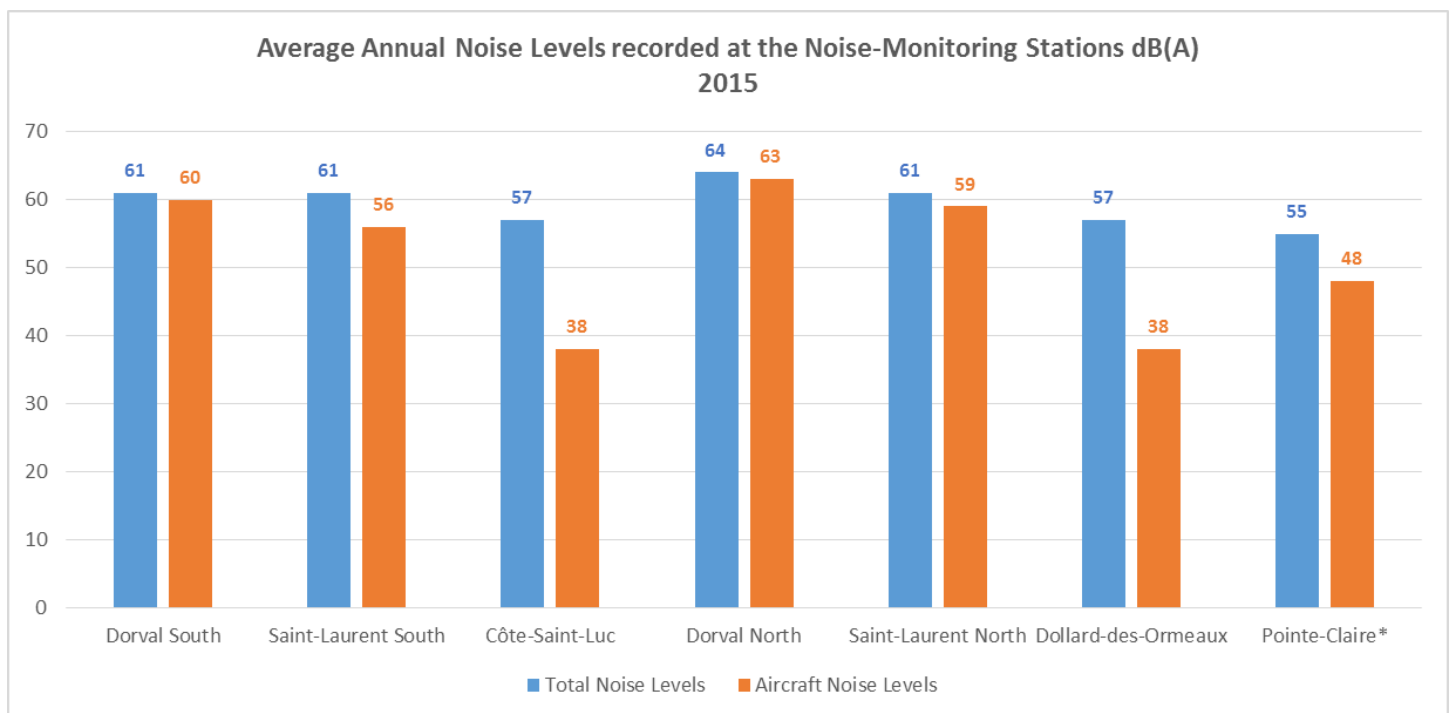
- Normalized contour that includes all aircraft movements
- Sound footprint of Montréal-Trudeau : 17.4 km<sup>2</sup> in 2014, decrease of 58.8% compared with the 42.2 km<sup>2</sup> registered in 1995.
- Number of people living under the noise footprint has declined by 91.6% since 1995, from 39,421 to 3,304.
- The NEF 2014 contour has remained stable compared with that from 2013.





### C. ANNUAL LEQ – 2015

The Leq average noise levels recorded at the noise-monitoring stations are presented. There are three types of report: total noise (all noise sources) aircraft noise, and community noise (train, truck and other noise not related to aircraft movements). The -21 dB(A) noise-attenuation factor due to home insulation, used by the World Health Organization (WHO), must also be considered.



\*Data from January to August 2015 (due to work).

- Noise levels measured in Dollard-des-Ormeaux, Côte-Saint-Luc and Pointe-Claire are significantly lower than community noise levels.
- The Dorval North station is very close to the runway (1 km).



#### **D. MOBILE NOISE-MONITORING STATION**

During 2015, the mobile station was deployed for periods of approximately 1 month at Centre Claude-Robillard in Ahuntsic-Cartierville, at Rockland Shopping Centre in Town of Mount-Royal, and in Jarry Park, in Villeray. The Nighttime Leq (aircraft) are:

	<b>Nighttime Leq (aircraft)</b>	<b>Nighttime Leq inside the home</b>
Ahuntsic-Cartierville	45 dB(A)	24 dB(A)
Ville Mont-Royal	50 dB(A)	29 dB(A)
Villeray	39 dB(A)	18 dB(A)

In 2016, the station was deployed in Henri-Julien Park from March 18<sup>th</sup> to April 18<sup>th</sup>. The nighttime Leq (aircraft) is:

	<b>Nighttime Leq (Aircraft)</b>	<b>Nighttime Leq Inside the home</b>
Parc Henri-Julien	48 dB(A)	27 dB(A)

The World Health Organization (WHO) attenuation factor of -21 dB(A) is used for the Leq measure inside the home.

Note that the sound meter is calibrated by professionals at the start and end of each installation.



## **E. TRANSPORT CANADA CONSULTATION ON AIRPORT ZONING**

Mr. J. Bourgault of Transport Canada explains the Transport Canada consultation process on the airport zoning. He shows members the information presented to citizens during the public meetings. A copy of the Transport Canada presentation is posted with this summary.

## **F. OVERVIEW OF CONSTRUCTION WORK – SUMMER 2016**

An overview of the work planned for summer 2016 is presented to the Committee. The work will be primarily in two zones: the north apron and the enlargement of the bay of runway 06R.

Overview of the work:

1. From May 9<sup>th</sup> to July 11<sup>th</sup>, runway 10-28 closed – work on northern section of the apron.
2. From July 12<sup>th</sup> to November – work to enlarge the bay of runway 06R
  - Runway 06R-24L closed (approximately 1 week) – preparation work
  - Relocated threshold of runway 06R-24L (until November) – work on bay of runway 06R

# MONTRÉAL-TRUDEAU LA GESTION DU CLIMAT SONORE SOUNDSCAPE MANAGEMENT



Increase of over flights: Dorval North, Pointe-Claire, Saint-Laurent North and Ahuntsic-Cartierville.

